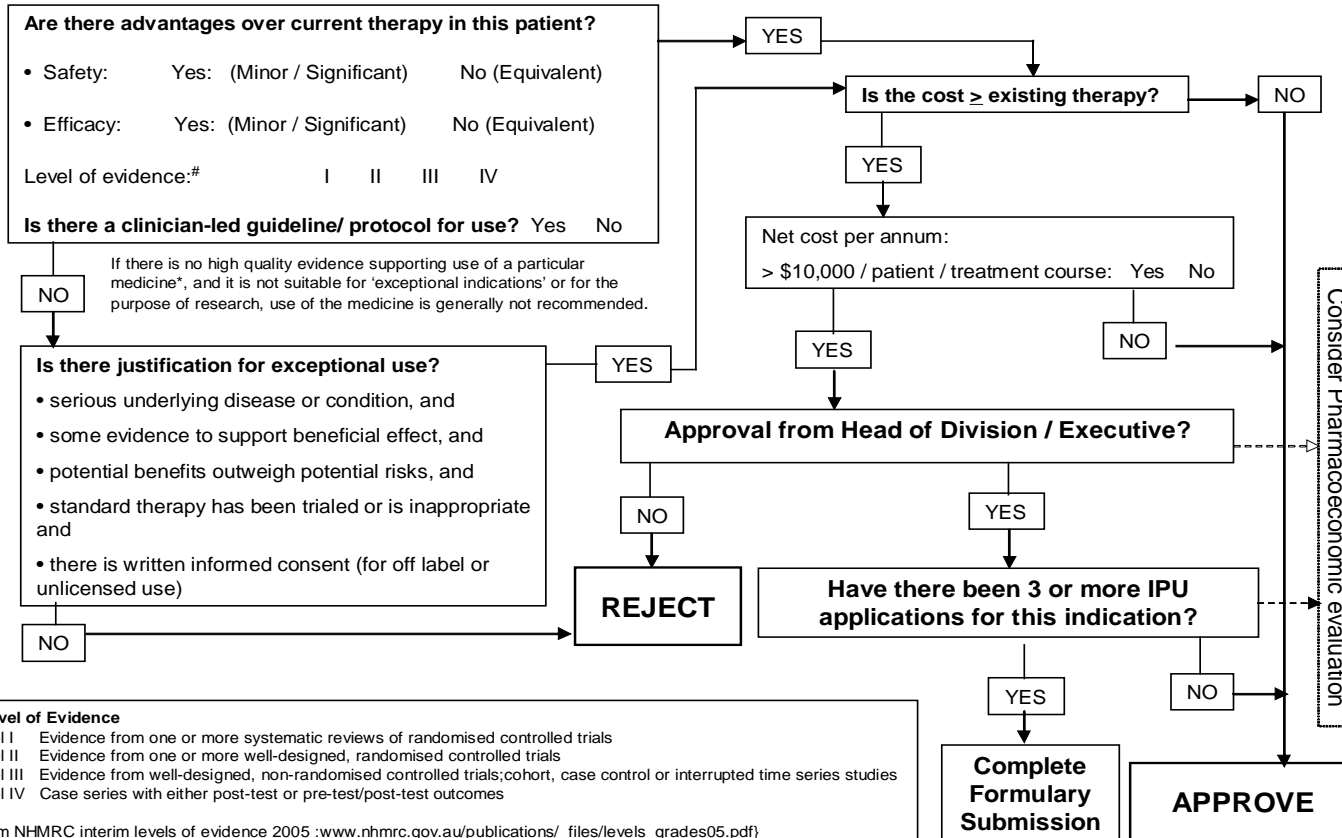


Decision Algorithm for evaluation of medicines for individual patient use (IPU) approval

IPU Decision Algorithm: *Is exceptional use justified in an individual patient?



Level of Evidence
 Level I Evidence from one or more systematic reviews of randomised controlled trials
 Level II Evidence from one or more well-designed, randomised controlled trials
 Level III Evidence from well-designed, non-randomised controlled trials; cohort, case control or interrupted time series studies
 Level IV Case series with either post-test or pre-test/post-test outcomes
 (From NHMRC interim levels of evidence 2005 :www.nhmrc.gov.au/publications/_files/levels_grades05.pdf)

*** Evaluation of evidence**
 For more detailed guidance on evaluation of evidence, see Gazarian et al. MJA 2006;185: 544-548.
 In particular, refer page 545: Assessing appropriateness – evaluation of evidence